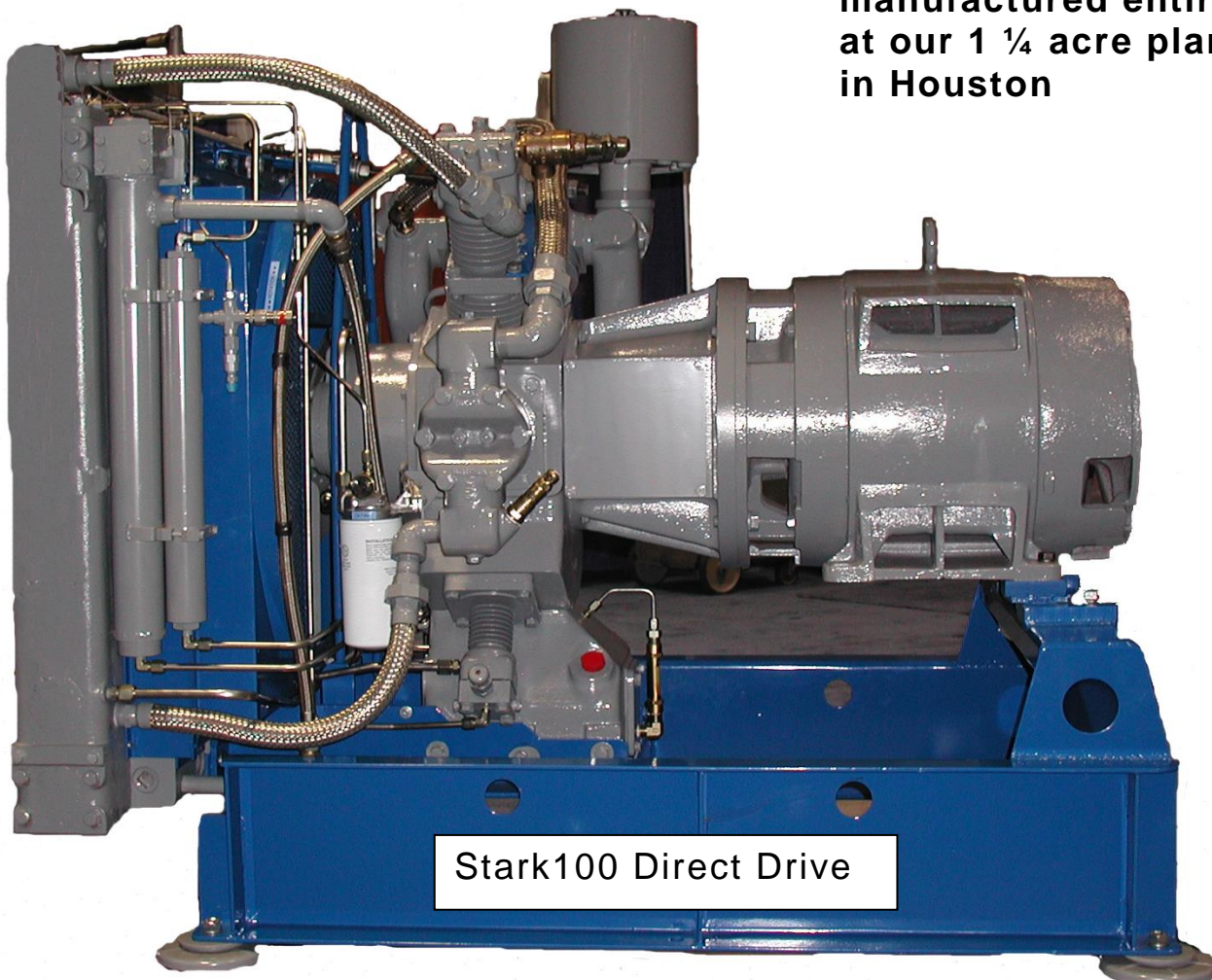


## Stark Model DD-100

- Air Flow – 100 CFM @ 6000 PSI
- Motor – 100 HP, 480 volt, 3Ø, 124 Amps
- Motor controls and overload protection
- Inter-stage pressure gauges
- Low oil shutdown switch
- High air pressure shutdown switch
- Manual or automatic drain valves
- Dimensions (Direct Drive) – 65" x 45" x 54" high, Weight – 2800 #



**This compressor is  
manufactured entirely  
at our 1 ¼ acre plant  
in Houston**



# Special Features



Oil Level Sight Glass



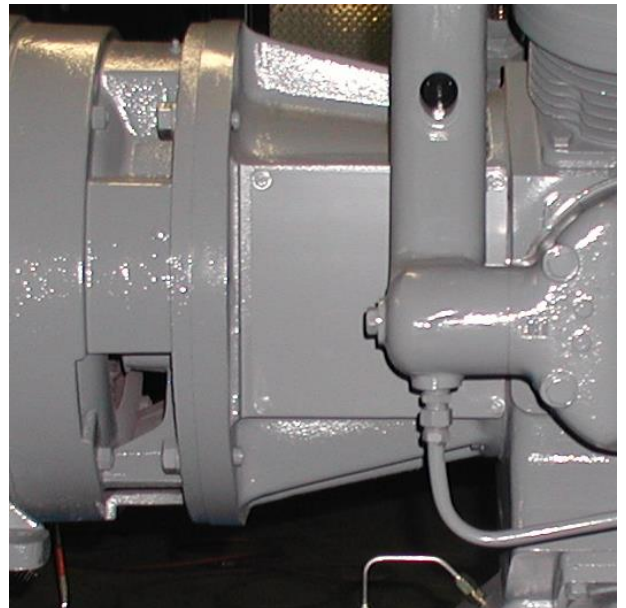
Oil fill extension & bell mouth



Spin Off Oil Filter



Gauge Panel – 316 SS



- Direct Drive
- No Belts
- Smooth Operation
- Compact Package
- Better Access to All Components

These machines are manufactured at our 40,000 Sq. Ft. facility in Houston, TX, A complete supply of spare parts is on our shelves.

713-592-0377

888-713-4444

Fax 592-8055

# Breathing Air Applications



713-592-0377

888-713-4444

Fax 592-8055





713-592-0377

888-713-4444

Fax 592-8055